

In vivo imaging of cellular proliferation in renal cell carcinoma using ¹⁸F-fluorothymidine PET

Peter K. Wong^{1,3}, Sze Ting Lee^{2,3,4}, Carmel Murone³, John Eng², Nathan Lawrentschuk^{1,3}, Salvatore U. Berlangieri², Kunthi Pathmaraj², Graeme J. O'Keefe², John Sachinidis², Amanda J. Byrne², Damien M. Bolton¹, Ian D. Davis^{3,4}, Andrew M. Scott^{2,3,4*}

¹ Department of Surgery and Urology, University of Melbourne, Austin Hospital, Heidelberg, Victoria, Australia

² Centre for PET, Austin Hospital, Heidelberg, Victoria, Australia

³ Ludwig Institute for Cancer Research, Austin Hospital, Heidelberg, Victoria, Australia

⁴ Department of Medicine, University of Melbourne, Austin Hospital, Heidelberg, Victoria, Australia

ARTICLE INFO

Article type:

Original article

Article history:

Received: 11 Dec 2013

Accepted: 1 Feb 2014

Keywords:

FDG PET

FLT PET

Renal cell carcinoma

ABSTRACT

Objective(s): The ability to measure cellular proliferation non-invasively in renal cell carcinoma may allow prediction of tumour aggressiveness and response to therapy. The aim of this study was to evaluate the uptake of ¹⁸F-fluorothymidine (FLT) PET in renal cell carcinoma (RCC), and to compare this to ¹⁸F-fluorodeoxyglucose (FDG), and to an immunohistochemical measure of cellular proliferation (Ki-67).

Methods: Twenty seven patients (16 male, 11 females; age 42-77) with newly diagnosed renal cell carcinoma suitable for resection were prospectively enrolled. All patients had preoperative FLT and FDG PET scans. Visual identification of tumour using FLT PET compared to normal kidney was facilitated by the use of a pre-operative contrast enhanced CT scan. After surgery tumour was taken for histologic analysis and immunohistochemical staining by Ki-67.

Results: The SUVmax (maximum standardized uptake value) mean±SD for FLT in tumour was 2.59±1.27, compared to normal kidney (2.47±0.34). The mean SUVmax for FDG in tumour was similar to FLT (2.60±1.08). There was a significant correlation between FLT uptake and the immunohistochemical marker Ki-67 ($r=0.72$, $P<0.0001$) in RCC. Ki-67 proliferative index was mean ± SD of 13.3%±9.2 (range 2.2% - 36.3%).

Conclusion: There is detectable uptake of FLT in primary renal cell carcinoma, which correlates with cellular proliferation as assessed by Ki-67 labelling index. This finding has relevance to the use of FLT PET in molecular imaging studies of renal cell carcinoma biology.

► Please cite this paper as:

Wong PK, Lee ST, Murone C, Eng J, Lawrentschuk N, Berlangieri SU, Pathmaraj K, O'Keefe GJ, Sachinidis J, Byrne AJ, Bolton DM, Davis ID, Scott AM. *In vivo* imaging of cellular proliferation in renal cell carcinoma using ¹⁸F-fluorothymidine PET. *Asia Oceania J Nucl Med Biol.* 2014; 2(1): 3-11.

Introduction

In recent years, positron emission tomography (PET) with ¹⁸F-fluorothymidine (FLT) has been used to image cellular proliferation. The ability to measure proliferation *in vivo* has several benefits,

including the detection of tumour, the non-invasive assessment of tumour grade (1, 2), and evaluation of response to therapy (3-7). A number of tumours, including breast, thoracic, colorectal, soft tissue sarcomas and lymphoma

* Corresponding author: Prof Andrew M Scott, Centre for PET, Austin Hospital Studley Rd, Heidelberg, Melbourne, Victoria, 3084, Australia. Tel: +613 9496 5876; Fax: +613 9496 5892; Email: andrew.scott@ludwig.edu.au

© 2014 *mums.ac.ir* All rights reserved.

This is an Open Access article distributed under the terms of the Creative Commons Attribution License (<http://creativecommons.org/licenses/by/3.0>), which permits unrestricted use, distribution, and reproduction in any medium, provided the original work is properly cited.

have been studied with FLT PET, with a correlation between FLT uptake and immunohistochemical measurements of proliferation (Ki-67) reported (2, 8-17). However, the role of FLT PET in renal cell carcinoma (RCC) has yet to be established, particularly in terms of correlation with Ki-67 proliferation index (18). Whilst FLT uptake has been shown to increase during sunitinib withdrawal in patients with renal cell carcinoma and other solid malignancies, this was not correlated with post-treatment Ki-67 proliferation index (19).

FLT accumulates in proliferating cells by undergoing phosphorylation by the enzyme thymidine kinase 1 (TK₁). This leads to intracellular trapping of FLT. The activity of TK₁ varies during the cell cycle, being highest during the late G1 and S phases of the cell cycle, when preparation for DNA synthesis is occurring. During G0 (quiescent) phase there is very low or no activity of TK₁. Therefore proliferating tissue, such as tumour, is expected to have uptake of FLT. In addition, malignant cells have been shown to have deregulated TK₁ activity, leading to increased phosphorylation and accumulation of FLT (20, 21).

A potential advantage of a proliferative tracer compared to the more commonly used PET tracer ¹⁸F-fluorodeoxyglucose (FDG) is the improved ability to distinguish inflammation from tumour. FDG PET reflects glucose metabolism, which may be increased in both benign inflammatory and malignant tissue. Animal studies comparing FLT with FDG in acutely inflamed or infected tissue have shown that FLT PET is less likely to be falsely positive in these situations (22). *In vitro* studies have demonstrated that FLT PET can measure the antiproliferative effects of tyrosine kinase inhibitors (23). With the introduction of tyrosine-kinase inhibitors for metastatic RCC, such as sunitinib (Sutent®, Pfizer) and sorafenib (Nexavar®, Bayer/Onyx), FLT PET may have the potential to be used to detect a response to these treatments.

The purpose of this study was to determine whether cellular proliferation can be quantitatively imaged in primary RCC by FLT PET. A secondary aim was to compare the uptake of FLT to FDG as measured by maximum standardized uptake values (SUV_{max}), and establish whether a correlation exists between FLT uptake, morphologic changes in tumour and cellular proliferation by Ki-67 immunohistochemistry staining in RCC.

Methods

Patients

Patients with suspected renal cell carcinoma suitable for nephrectomy were invited to participate in this study. All patients signed informed consent to a protocol which was approved by the Austin Health Human Research Ethics Committee. Patients had FDG PET and FLT PET scans within two weeks prior to surgery. Histopathologic assessment of all tumours was performed for diagnosis and grading, and immunohistochemical staining for the proliferative marker Ki-67.

PET scan procedure & image interpretation

Synthesis of FDG and FLT occurred on site in our radiochemistry facilities, using an in-house cyclotron (Ion Beam Applications S.A., Louvain-la-Neuve, Belgium) and radiochemistry synthesis techniques as previously described (24, 25). FDG studies were conducted 60 minutes after injection of 370 MBq of FDG. Patients were fasted for at least six hours prior to their scan. FLT scans were conducted on a separate day, with patients not required to fast. 370 MBq of ¹⁸F-FLT was administered, and scanning occurred after 60 minutes. Standard whole body images (from base of skull to mid thighs) for both PET scans were acquired on the Gemini PET/CT (Phillips Healthcare, Cleveland, Ohio, USA) or Allegro PET (Phillips Healthcare, Cleveland, Ohio, USA) scanner. Attenuation correction was performed from low dose CT scan (Gemini PET scanner), or ¹³⁷Cs point source (Allegro PET scanner).

CT scans and patient history were available to two nuclear medicine specialists. The CT scans were used to identify the region of interest (ROI) for analysis and calculation of standardized uptake values. To improve the accuracy in identifying tumour from excreted radiotracer delayed phase, CT scans were used to exclude the collecting system from the region of interest. The contralateral kidney was used to represent the SUV_{max} of normal kidney. A visual grading system was also used to assess tumours. A score of 0 represented tumour uptake less than normal kidney, 1 representing an isointense tumour, and 2-4 uptake being mild, moderate or markedly greater than normal tissue.

Histology and immunohistochemistry

The diagnosis of disease was based on histopathology obtained via surgical resection. To determine Ki-67 staining, paraffin blocks of

Table 1. Patient characteristics

Patient	Age	Sex	Size (mm)	Grade	Diagnosis
1	59	M	55	4	Transitional cell
2	63	M	60	3	Clear cell
3	68	F	80	3	Clear cell
4	62	F	100	3	Clear cell
5	63	F	90	3	Clear cell
6	58	M	35	3	Papillary
7	49	M	33	1	Clear cell
8	64	M	33	1	Papillary
9	58	F	18	2	Clear cell
10	46	F	27	2	Clear cell
11	43	F	65	2	Clear cell
12	63	M	30	4	Clear cell
13	77	M	75	3	Clear cell
14	60	M	75	4	Sarcomatoid
15	43	M	75	4	Clear cell
16	62	F	17	3	Papillary
17	47	F	19	2	Papillary
18	42	M	35	2	Clear cell
19	50	M	35	2	Clear cell
20	65	F	20	n/a	Organising haematoma
21	72	M	52	3	Clear cell
22	45	M	20	n/a	benign hamartoma
23	55	M	35	2	Clear cell
24	58	M	32	3	Papillary
25	73	M	35	2	Chromophobe
26	44	F	25	2	Clear cell
27	66	F	35	-	Oncocytoma

tumour were cut into 4 µm sections, dewaxed, and antigen was retrieved in citrate buffer at 100 °C water bath for 20 minutes. They were then stained with a monoclonal antibody to Ki-67 (rabbit monoclonal IgG antibody, clone SP6, Thermo Fisher Scientific, Fremont, CA, USA) in a 1:50 dilution. Positive and negative controls were obtained, either through the use of highly proliferating reference tissue, or by using an IgG-matched control antibody, or omission of the primary antibody. Areas with the greatest density of staining were chosen for analysis. At 400x magnification, image acquisition software (ImageJ, National Institutes of Health, USA) was used to assist in manually counting at least 500 cells, in three fields within the region of interest. Nuclei with any staining for Ki-67 were considered positive. The Ki-67 proliferative index was defined as the percentage of Ki-67 stained nuclei per total nuclei.

Statistical analysis

Paired t-tests were used to compare FLT and FDG standardized uptake values. Linear regression analysis was used to compare Ki-67 uptake and SUV. A *P* value of <0.05 was considered to be statistically significant.

Results

Patient characteristics

Twenty seven patients (16 males, 11 females; mean age 57.6 years, range 42-77) with suspected primary renal cell carcinoma were recruited into the study. Post operative histology revealed sixteen clear cell RCCs, five papillary RCCs, and one each of sarcomatoid, chromophobe, transitional cell carcinoma (TCC) and oncocytoma. Two patients were found to have benign pathology. Patient characteristics are summarized in Table 1.

FLT PET scan

FLT showed uptake in the majority of RCC tumours with a mean tumour SUV_{max} of 2.59±1.27 (range 0.9 – 7.6) (Table 2). The mean tumour SUV_{max} was higher than the mean SUV_{max} of normal kidney, which was 2.47±0.34 (range 1.7 - 3.5), but this did not reach statistical significance. Five tumours had visually discernable uptake greater than the contralateral kidney (visual grading scale 2 – 4) (Figure 1). Nine tumours had a SUV_{max} greater than normal kidney. One of these was a transitional cell carcinoma, having the highest SUV_{max} of 7.6, and highest tumour to normal

Table 2. PET scan analysis and Ki-67 proliferative index

Patient	Grade	Diagnosis	Ki-67	¹⁸ F-FLT SUV _{max}	¹⁸ F-FLT (T/N)	¹⁸ F-FDG SUV _{max}	¹⁸ F-FDG (T/N)
1	4	Transitional cell	33.6	7.6	3.6	4.3	1.7
2	3	Clear cell	12.7	2.3	1.1	2.3	1.1
3	3	Clear cell	17.6	2.9	1.0	3.2	1.1
4	3	Clear cell	7.6	1.4	0.6	2.5	1.2
5	3	Clear cell	13.9	2.4	0.9	2.5	1.0
6	3	Papillary	12.1	2.1	0.8	2.4	0.9
7	1	Clear cell	10.6	2.5	1.0	2.5	0.9
8	1	Papillary	12.0	1.9	0.8	3.4	1.2
9	2	Clear cell	7.5	2.5	1.1	2.2	0.9
10	2	Clear cell	15.2	2.6	1.2	2.2	0.8
11	2	Clear cell	4.7	0.9	0.3	1.0	0.6
12	4	Clear cell	28.5	3.9	1.6	3.1	1.5
13	3	Clear cell	18.6	2.2	0.8	2.4	1.0
14	4	Sarcomatoid	21.5	2.6	0.9	6.0	2.4
15	4	Clear cell	36.3	3.6	1.6	4.0	1.7
16	3	Papillary	9.9	3.7	1.1	2.6	1.0
17	2	Papillary	21.8	3.9	1.6	4.6	2.3
18	2	Clear cell	4.2	1.8	0.7	1.8	0.7
19	2	Clear cell	6.6	1.4	0.6	1.5	1.9
20	-	Organising haematoma	n/a	2.3	1.0	2.0	1.3
21	3	Clear cell	13.5	3.4	1.3	2.4	1.4
22	-	Benign hamartoma	n/a	2.2	0.9	2.3	1.0
23	2	Clear cell	6.7	1.9	0.8	1.6	0.9
24	3	Papillary	5.9	1.7	0.6	1.7	1.1
25	2	Chromophobe	2.2	1.6	0.9	1.8	1.2
26	2	Clear cell	5.9	1.7	0.7	2.1	1.2
27	-	Oncocytoma	3.5	2.8	1.3	1.9	1.0

(T/N) – Ratio of SUV_{max} tumour to SUV_{max} normal kidney

tissue ratio at 3.6. There was a trend for low grade tumours (Grade 1 – 2; Figure 2) to have a lower mean SUV_{max} at 2.06±0.79, compared to high grade tumours (Grade 3 - 4), which had a mean SUV_{max} of 2.94±1.59). However, this did not reach statistical significance ($P=0.09$). Size

and histological RCC subtype did not correlate with FLT uptake.

FDG PET scan

FDG PET showed low grade uptake in RCC tumours (Table 2). The mean tumour SUV_{max}

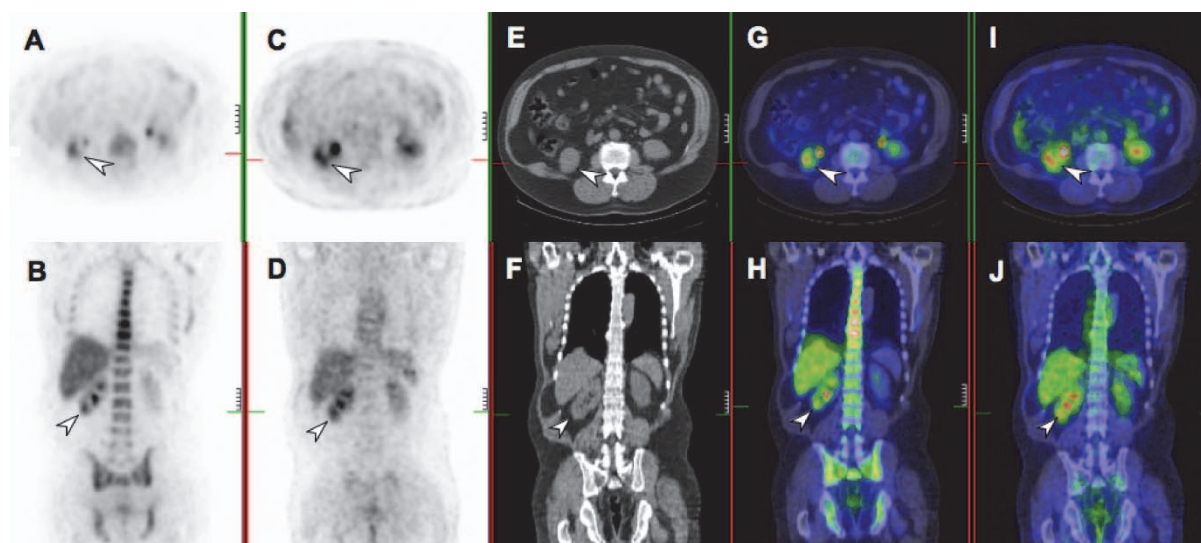


Figure 1. Transaxial and coronal views of a high grade clear cell RCC (arrows). Local recurrence in the right renal bed is seen on FLT PET (A, B), with focalised high uptake. The tumour is also seen in corresponding FDG PET (C, D) and CT (E, F) images. Fused PET-CT images further demonstrate the region of uptake for FLT (G, H) and FDG (I, J)

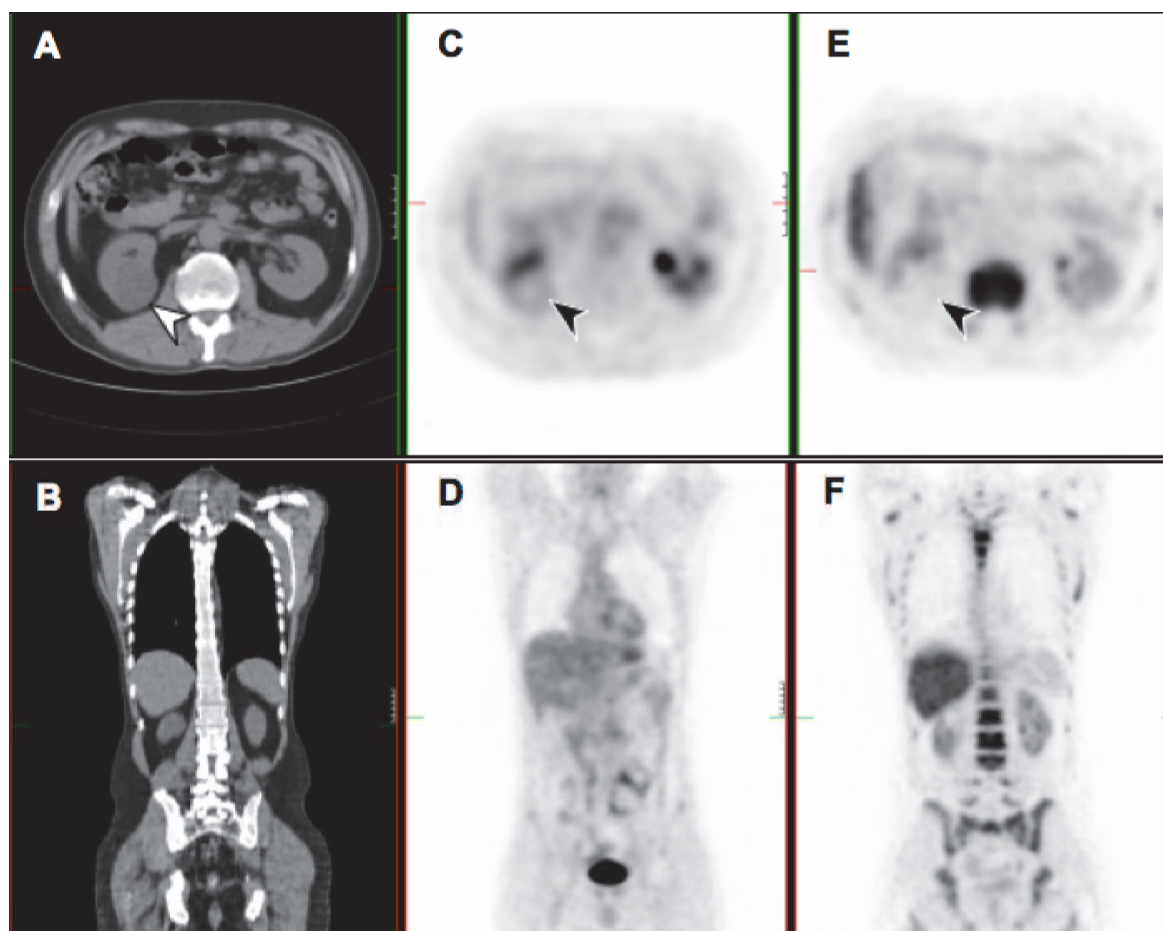


Figure 2. Transaxial and coronal views of a low grade clear cell RCC (arrows). A 35mm mass is seen on the CT image (A, B), with corresponding FDG PET (C, D) and FLT PET (E, F). Uptake in the tumour was less than in surrounding normal kidney

was 2.60 ± 1.08 (range 1.0 - 6.0), and was again found to be slightly greater than that of normal kidney, which had a mean SUV_{max} of 2.20 ± 0.54 (range 0.8 - 2.9). There was a greater uptake ratio for tumour to normal tissue in FDG compared to FLT, being 1.21 for FDG, and 1.04 for FLT, although this was not statistically significant ($P=0.25$). A significant difference between the mean SUV_{max} for low grade tumours at 2.25 ± 0.99 , compared to high grade tumours at 3.03 ± 1.14 ($P=0.03$) was observed. There was significant correlation between the FLT SUV_{max} and FDG SUV_{max} ($r=0.52$, $P=0.005$).

Ki-67 proliferative index

Twenty five tumours were available for analysis using the proliferative marker Ki-67, as no tumour was present in two cases (mean $13.3\% \pm 9.1$, Table 2). Proliferative index results ranged from 2.1% to 36.2% of cells staining positive. There was a significant correlation between FLT SUV_{max} and Ki-67 ($r=0.72$, $P<0.0001$; Figure 3) and for FDG SUV_{max} with Ki-67 ($r=0.73$, $P<0.0001$; Figure 4).

Ki-67 proliferative index correlated with tumour grade. Low to moderate grade tumours had 8.9 % of cells positive for Ki-67, and high grade tumours 17.8% ($P=0.009$). Tumour stage, histological subtype and size failed to show a correlation with Ki-67 labelling index.

Extra-renal disease

Although not the focus of this study, one patient was found to have several pulmonary metastases on PET and CT. Six lesions greater than 15 mm were seen on CT, with FDG PET identifying all. FLT PET identified four of these lesions. Semi-quantitative analysis found greater uptake in FDG PET, with a tumour to normal tissue ratio of 6.5 compared to 4.0 in FLT PET. In comparison, the uptake ratio in the corresponding primary tumour was 1.7 for FDG PET and 0.9 for FLT PET.

Discussion

There is increasing literature on the role of FLT PET in various tumour types looking at tumour detection and non-invasively assessing

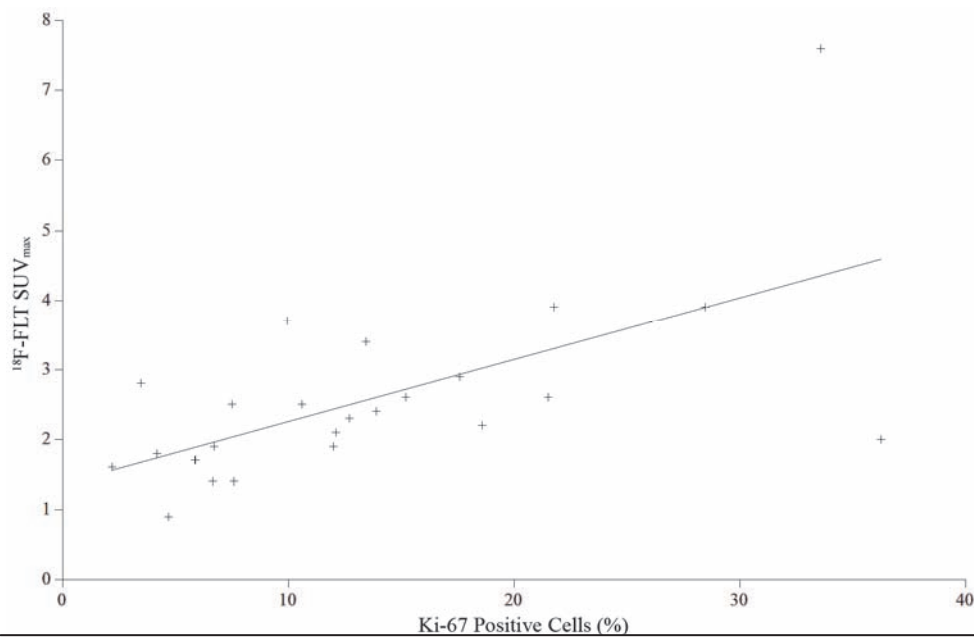


Figure 3. Linear regression analysis of SUV_{max} of ¹⁸F-FLT and Ki-67 proliferation index. A significant correlation was found ($r=0.72$, $P<0.0001$)

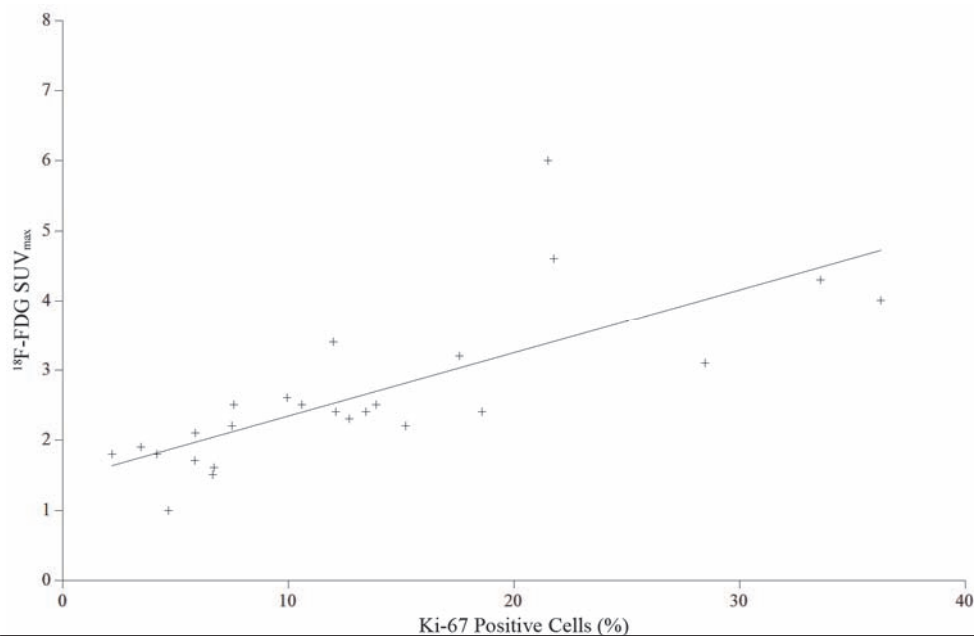


Figure 4. Linear regression analysis of SUV_{max} of ¹⁸F-FDG and Ki-67 proliferation index. A significant correlation was found ($r=0.73$, $P<0.0001$)

tumour proliferation and tumour grade. To our knowledge, this is the first study to show detectable uptake of FLT in primary RCC and to correlate uptake with FDG and Ki-67 proliferative index. FLT uptake in primary RCC was observed, and correlated with tumour proliferative index. There was also a trend for high grade tumours to have increased FLT uptake compared to lower grade tumours. Other studies have found a similar correlation between FLT uptake and Ki-67 proliferative

index, including glioma, breast cancer, colorectal cancer, lymphoma, and thoracic cancers (2, 9, 11-17, 26). However, there are conflicting reports where a correlation has not been observed (27-29). In a study of 12 patients with breast cancer, 13 of 14 primary lesions were visualised by FLT PET but no correlation between SUV and Ki-67 was found (28). In contrast, another study found a correlation coefficient of 0.79 in 12 breast cancers (14). Similarly, in thoracic tumours, there are at least

two reports (27, 29) which failed to observe a correlation, conflicting with other studies (9, 15, 17). Possible explanations have included tumour pathologic diversity (27), and the varying protocols for FLT PET scanning (14).

Due to low physiological uptake in the mediastinum and brain, most FLT PET studies have been focussed on these regions. FLT PET has been shown to have excellent sensitivity for tumour in these regions, even where FLT uptake is less than FDG (10, 27). Although we found similar uptake of FLT and FDG in tumour, most studies have found FLT uptake to be approximately half that of FDG (11, 13, 17, 27, 29). Despite this, the low background uptake of FLT in these areas still allows visualisation of tumour. In our study, integration of anatomic information from CT scans assisted in differentiating FLT uptake in tumour from urinary background uptake.

The nuclear protein Ki-67 can be detected in cells during late G1, S, M, and G2 phases of the cell cycle, but not in the G0 phase. The Ki-67 labelling index has been shown to be an independent risk factor in the prognosis of clear cell RCC (30-32), as well as differentiating low from high grade tumours (32). Our study found low proliferation rates in renal cell carcinoma, as measured by Ki-67 staining. In contrast, Ki-67 levels as high as 85-90% has been observed for other solid tumours (13, 15, 16, 28, 29). Our Ki-67 results are in keeping with prior published studies, and suggest an underlying low proliferative rate in primary RCC. Another possible explanation is that the DNA salvage pathway is not highly active in RCC, which could partly account for the low FLT SUV_{max} found in our study.

Ki-67 uptake was able to differentiate between low and moderate grade tumours and high grade tumours in our study. Visapaa also found that there was increased Ki-67 staining with higher grade of RCC (32). Despite a positive correlation between Ki-67 and FLT uptake, we did not find a significant correlation between FLT uptake and tumour grade, which is most likely due to our sample size. Differentiation between FLT uptake and tumour grade has been reported for other tumours, including soft tissue sarcomas and glioma (12). There is also data that suggest that Ki-67 index may be used as a prognostic factor in RCC. De Risese was the first to report Ki-67 as an independent factor in disease free survival (30). Rioux found that patients with an index greater than 20% had a mean survival of 67 months compared to 42

months (31). In patients with matched tumour stage and grade, Ki-67 may be an additional factor in predicting prognosis.

FDG has been reported to have a sensitivity between 31 and 94% in the assessment of primary RCC (33-36). We found a strong correlation between FLT and Ki-67 ($r=0.72$), which was a similar finding for FDG SUV_{max} as well. The relationship between FDG uptake and proliferation in RCC as measured by FLT PET and Ki-67 proliferative index in renal cell carcinoma has not been previously reported, and our results indicate that the low glucose metabolic rate of primary RCC is matched by a low level of proliferation. Interestingly, one patient in our study had metastatic lesions identified, which all showed prominent uptake of FDG and FLT, highlighting the underlying biologic differences which may exist between primary and metastatic RCC. In many other tumour types, there has also been correlation between FLT uptake, tumour grade and even prognosis, as described in a recent review (37). However, this information has not been evaluated in renal cell carcinoma to date, apart from a pharmacodynamic study which used FLT PET to assess proliferative changes after sunitinib treatment which showed an increase in cellular proliferation as measured by FLT PET, but not with immunohistochemical analysis of Ki-67 index with pathology specimens (19).

Conclusion

FLT uptake in primary RCC is detectable and correlates with cellular proliferation on Ki-67 biopsy analysis. FLT uptake also correlates with FDG uptake in primary RCC. Further studies are required to define the role of FLT PET in assessing RCC response to treatment and in prognostic assessment, particularly in metastatic disease.

Acknowledgements

The authors wish to acknowledge the staff of the Centre for PET, Austin Hospital, for their assistance in performing the PET scans; and the surgeons of the Department of Surgery and Urology, Austin Hospital, for their support of the project.

Disclaimer: Ian D. Davis is supported in part by a Victorian Cancer Agency Clinician Researcher Fellowship, and is an Honorary Practitioner Fellow of the Australian National Health and Medical Research Council.

Peter K. Wong is supported in part by a Royal Australasian College of Surgeons Scholarship.

References

- Buck AK, Herrmann K, Buschenfelde CM, Juweid ME, Bischoff M, Glatting G, et al. Imaging bone and soft tissue tumors with the proliferation marker [18F]fluorodeoxythymidine. *Clin Cancer Res.* 2008; 14: 2970-7.
- Cobben DC, Elsinga PH, Suurmeijer AJ, Vaalburg W, Maas B, Jager PL, et al. Detection and grading of soft tissue sarcomas of the extremities with 18F-3'-fluoro-3'-deoxy-1-thymidine. *Clin Cancer Res.* 2004; 10: 1685-90.
- Apisarnthanarax S, Alauddin MM, Mourtada F, Ariga H, Raju U, Mawlawi O, et al. Early detection of chemoradioresponse in esophageal carcinoma by 3'-deoxy-3'-H-fluorothymidine using preclinical tumor models. *Clin Cancer Res.* 2006; 12: 4590-7.
- Atkinson DM, Clarke MJ, Mladek AC, Carlson BL, Trump DP, Jacobson MS, et al. Using fluorodeoxythymidine to monitor anti-EGFR inhibitor therapy in squamous cell carcinoma xenografts. *Head Neck.* 2008; 30: 790-9.
- Barthel H, Cleij MC, Collingridge DR, Hutchinson OC, Osman S, He Q, et al. 3'-deoxy-3'-[18F]fluorothymidine as a new marker for monitoring tumor response to antiproliferative therapy in vivo with positron emission tomography. *Cancer Res.* 2003; 63: 3791-8.
- Chen W, Delaloye S, Silverman DH, Geist C, Czernin J, Sayre J, et al. Predicting treatment response of malignant gliomas to bevacizumab and irinotecan by imaging proliferation with [18F] fluorothymidine positron emission tomography: a pilot study. *J Clin Oncol.* 2007; 25: 4714-21.
- Pio BS, Park CK, Pietras R, Hsueh WA, Satyamurthy N, Pegram MD, et al. Usefulness of 3'-[F-18]fluoro-3'-deoxythymidine with positron emission tomography in predicting breast cancer response to therapy. *Mol Imaging Biol.* 2006; 8: 36-42.
- Buck AK, Bommer M, Stilgenbauer S, Juweid M, Glatting G, Schirrmeister H, et al. Molecular imaging of proliferation in malignant lymphoma. *Cancer Res.* 2006; 66: 11055-61.
- Buck AK, Halter G, Schirrmeister H, Kotzerke J, Wurziger I, Glatting G, et al. Imaging proliferation in lung tumors with PET: 18F-FLT versus 18F-FDG. *J Nucl Med.* 2003; 44: 1426-31.
- Buck AK, Schirrmeister H, Hetzel M, Von Der Heide M, Halter G, Glatting G, et al. 3-deoxy-3-[[18F]fluorothymidine-positron emission tomography for noninvasive assessment of proliferation in pulmonary nodules. *Cancer Res.* 2002; 62: 3331-4.
- Chen W, Cloughesy T, Kamdar N, Satyamurthy N, Bergsneider M, Liau L, et al. Imaging proliferation in brain tumors with 18F-FLT PET: comparison with 18F-FDG. *J Nucl Med.* 2005; 46: 945-52.
- Choi SJ, Kim JS, Kim JH, Oh SJ, Lee JG, Kim CJ, et al. [18F]3'-deoxy-3'-fluorothymidine PET for the diagnosis and grading of brain tumors. *Eur J Nucl Med Mol Imaging.* 2005; 32: 653-9.
- Francis DL, Freeman A, Visvikis D, Costa DC, Luthra SK, Novelli M, et al. In vivo imaging of cellular proliferation in colorectal cancer using positron emission tomography. *Gut.* 2003; 52: 1602-6.
- Kenny LM, Vigushin DM, Al-Nahhas A, Osman S, Luthra SK, Shousha S, et al. Quantification of cellular proliferation in tumor and normal tissues of patients with breast cancer by [18F]fluorothymidine-positron emission tomography imaging: evaluation of analytical methods. *Cancer Res.* 2005; 65: 10104-12.
- Vesselle H, Grierson J, Muzi M, Pugsley JM, Schmidt RA, Rabinowitz P, et al. In vivo validation of 3'-deoxy-3'-[[18F]fluorothymidine ([[18F]FLT) as a proliferation imaging tracer in humans: correlation of [[18F]FLT uptake by positron emission tomography with Ki-67 immunohistochemistry and flow cytometry in human lung tumors. *Clin Cancer Res.* 2002; 8: 3315-23.
- Wagner M, Seitz U, Buck A, Neumaier B, Schultheiss S, Bangerter M, et al. 3'-[18F]fluoro-3'-deoxythymidine ([18F]-FLT) as positron emission tomography tracer for imaging proliferation in a murine B-Cell lymphoma model and in the human disease. *Cancer Res.* 2003; 63: 2681-7.
- Yap CS, Czernin J, Fishbein MC, Cameron RB, Schiepers C, Phelps ME, et al. Evaluation of thoracic tumors with 18F-fluorothymidine and 18F-fluorodeoxyglucose-positron emission tomography. *Chest.* 2006; 129: 393-401.
- Bouchelouche K, Oehr P. Positron emission tomography and positron emission tomography/computerized tomography of urological malignancies: an update review. *J Urol.* 2008; 179: 34-45.
- Liu G, Jeraj R, Vanderhoek M, Perlman S, Kolesar J, Harrison M, et al. Pharmacodynamic study using FLT PET/CT in patients with renal cell cancer and other solid malignancies treated with sunitinib malate. *Clin Cancer Res.* 2011; 17: 7634-44.
- Been LB, Suurmeijer AJ, Cobben DC, Jager PL, Hoekstra HJ, Elsinga PH. [18F]FLT-PET in oncology: current status and opportunities. *Eur J Nucl Med Mol Imaging.* 2004; 31: 1659-72.
- Francis DL, Visvikis D, Costa DC, Arulampalam TH, Townsend C, Luthra SK, et al. Potential impact of [18F]3'-deoxy-3'-fluorothymidine versus [18F]fluoro-2-deoxy-D-glucose in positron emission tomography for colorectal cancer. *Eur J Nucl Med Mol Imaging.* 2003; 30: 988-94.

22. van Waarde A, Cobben DC, Suurmeijer AJ, Maas B, Vaalburg W, de Vries EF, et al. Selectivity of ¹⁸F-FLT and ¹⁸F-FDG for differentiating tumor from inflammation in a rodent model. *J Nucl Med.* 2004; 45: 695-700.
23. Wei LH, Su H, Hildebrandt IJ, Phelps ME, Czernin J, Weber WA. Changes in tumor metabolism as readout for Mammalian target of rapamycin kinase inhibition by rapamycin in glioblastoma. *Clin Cancer Res.* 2008; 14: 3416-26.
24. Cher LM, Murone C, Lawrentschuk N, Ramdave S, Papenfuss A, Hannah A, et al. Correlation of hypoxic cell fraction and angiogenesis with glucose metabolic rate in gliomas using ¹⁸F-fluoromisonidazole, ¹⁸F-FDG PET, and immunohistochemical studies. *J Nucl Med.* 2006; 47: 410-8.
25. Cherk MH, Foo SS, Poon AM, Knight SR, Murone C, Papenfuss AT, et al. Lack of correlation of hypoxic cell fraction and angiogenesis with glucose metabolic rate in non-small cell lung cancer assessed by ¹⁸F-Fluoromisonidazole and ¹⁸F-FDG PET. *J Nucl Med.* 2006; 47: 1921-6.
26. Muzi M, Vesselle H, Grierson JR, Mankoff DA, Schmidt RA, Peterson L, et al. Kinetic analysis of 3'-deoxy-3'-fluorothymidine PET studies: validation studies in patients with lung cancer. *J Nucl Med.* 2005; 46: 274-82.
27. Dittmann H, Dohmen BM, Paulsen F, Eichhorn K, Eschmann SM, Horgner M, et al. [¹⁸F]FLT PET for diagnosis and staging of thoracic tumours. *Eur J Nucl Med Mol Imaging.* 2003; 30: 1407-12.
28. Smyczek-Gargya B, Fersis N, Dittmann H, Vogel U, Reischl G, Machulla HJ, et al. PET with [¹⁸F]fluorothymidine for imaging of primary breast cancer: a pilot study. *Eur J Nucl Med Mol Imaging.* 2004; 31: 720-4.
29. van Westreenen HL, Cobben DC, Jager PL, van Dullemen HM, Wesseling J, Elsinga PH, et al. Comparison of ¹⁸F-FLT PET and ¹⁸F-FDG PET in esophageal cancer. *J Nucl Med.* 2005; 46: 400-4.
30. de Riese WT, Crabtree WN, Allhoff EP, Werner M, Liedke S, Lenis G, et al. Prognostic significance of Ki-67 immunostaining in nonmetastatic renal cell carcinoma. *J Clin Oncol.* 1993; 11: 1804-8.
31. Rioux-Leclercq N, Turlin B, Bansard J, Patard J, Manunta A, Moulinoux JP, et al. Value of immunohistochemical Ki-67 and p53 determinations as predictive factors of outcome in renal cell carcinoma. *Urology.* 2000; 55: 501-5.
32. Visapaa H, Bui M, Huang Y, Seligson D, Tsai H, Pantuck A, et al. Correlation of Ki-67 and gelsolin expression to clinical outcome in renal clear cell carcinoma. *Urology.* 2003; 61: 845-50.
33. Ak I, Can C. F-18 FDG PET in detecting renal cell carcinoma. *Acta Radiol.* 2005; 46: 895-9.
34. Bachor R, Kotzerke J, Gottfried HW, Brandle E, Reske SN, Hautmann R. [Positron emission tomography in diagnosis of renal cell carcinoma]. *Urologe A.* 1996; 35: 146-50.
35. Miyakita H, Tokunaga M, Onda H, Usui Y, Kinoshita H, Kawamura N, et al. Significance of ¹⁸F-fluorodeoxyglucose positron emission tomography (FDG-PET) for detection of renal cell carcinoma and immunohistochemical glucose transporter 1 (GLUT-1) expression in the cancer. *Int J Urol.* 2002; 9: 15-8.
36. Ramdave S, Thomas GW, Berlangieri SU, Bolton DM, Davis I, Danguy HT, et al. Clinical role of F-18 fluorodeoxyglucose positron emission tomography for detection and management of renal cell carcinoma. *J Urol.* 2001; 166: 825-30.
37. Tehrani OS, Shields AF. PET imaging of proliferation with pyrimidines. *J Nucl Med.* 2013; 54: 903-12.